







Vibe Hotels

Accessibility Guide

-  7 Kitchener Drive, Darwin, NT 0800, Australia
-  13 86 42
-  darwin@vibehotels.com.au
-  <https://vibehotels.com/book-accommodation/darwin/hotel-darwin-waterfront/>

Updated 1st June 2023

Acknowledgment of Traditional Owners

Vibe Hotels acknowledges the Larrakia people as the Traditional Owners and original custodians of this land and pay our respects to their Elders, past and present.

Acknowledgment of thanks

Vibe Hotels would also like to acknowledge the support and assistance provided by Flare Access Pty Ltd in helping to prepare this Accessibility Guide.

Contents

Welcome.....	4
Getting Here	5
Arrival	9
Communication and Wayfinding.....	10
Getting Around.....	11
Foyer	12
The Lift	13
Toilets	14
The Pool	17
The Gymnasium	20
Laundry	21
Getting To The Rooms.....	22
Standard Studio.....	23
One Bedroom	29



Welcome

Perfectly positioned amongst the entertainment and dining hub of Darwin's seafront promenade, Vibe Hotel Darwin Waterfront is surrounded by great shopping, a range of Territorian pubs, as well as some of the most amazing restaurants and cafés in the NT.

Indulge in experiences that allow guests to connect, with inspired interior design in bright rooms and cool communal areas, drink and dine offerings that emphasise what's fresh, plus connected conferencing spaces.

Access At A Glance



Accessible
Toilet



Step
Free
Access



Sounds



Accessible
Parking



Charging
Point



Scents



Accessible
Indoor
Dining



Accessible
Outdoor
Dining



Laundry



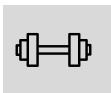
Lift



Baby
Changing
Table



Pool



Gym



Restaurant



Getting Here



Travel by public transport

Bus

- The nearest stop is for Bus Route 14C with the major stops of:
 - Darwin Interchange
 - Cullen Bay
 - Darwin Waterfront.
- The Route 14C bus is wheelchair accessible.
- It's approximately 60 m away with a step-free route available.
- Darwin Interchange is approximately 400 m from the restaurant with step-free access to the Waterfront.

Free Waterfront Shuttle from Kitchener Drive

- The Shuttle bus operates at peak lunch and dinner times; from 11:30am to 2 pm and 4 pm to 9 pm. Linking Stokes Hill Wharf, the Cruise Ship Terminal, residential apartments and hotels. The stop is approximately 50 m from the venue.
- The Shuttle is not wheelchair accessible.



Getting Here



Drop-off

- There is a drop-off point on Kitchener Drive with a ramped kurb approximately 15m from the entrance.
- The route to the restaurant has a path greater than 1000 mm wide and a level concrete surface.
- There is step-free access to reception.



Getting Here

Street Parking

- Parking on Kitchener Drive is \$3 per hour for a maximum of 2 hours. Accessible Parking is not available.
- Parking on Anchorage Court is \$2.50 per hour.
- Patrons with a valid Accessible Parking permit displayed on their windscreen can park in any car park on-street for double the time as signposted at no cost.
- Anchorage Court has three Accessible parking bays located at Fort Hill near 5 Anchorage Court. The venue is approximately 350 m from these bays.





Getting Here



Kitchener Drive multi-story car park

- Accessible parking is located on levels 2 and above, with five spaces close to the lifts. From the car park to the entrance of the restaurant there is step-free access.
- In use is a ticketless parking system. Payment is cashless and can be made by debit or credit card at the pay machines near the lifts or upon exit at the boom gate.
- Parking is free for under two hours.
- The venue is approximately 140 m from this car park.



Arrival



Path to the main entrance is tiled. From the frontage to the main entrance, there is steps free access. The path is 1000 mm wide, or more.



Main entrance

- There is a clear path of travel from outdoor to indoor areas.
- Both the entrances from Kitchener Drive and from the Waterfront have automatic sliding doors and a width exceeding 1000 mm.
- There is level access into the venue at both entrances.
- A free standing after-hours accessible button is situated 1000 mm from the ground.

Entrance from Kitchener Drive



Entrance from the Waterfront





Communication And Wayfinding



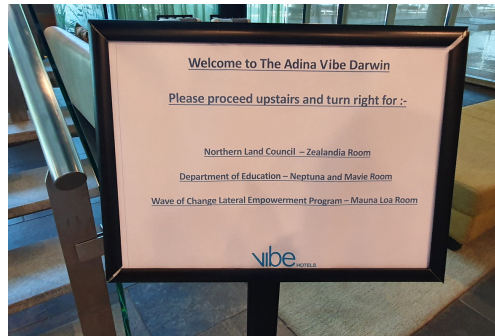
External Wayfinding

The hotel is clearly marked with clear signage on the outside of the building.



Internal Wayfinding

- Directional throughout the hotel is situated at a height of 1460- 1750 mm from the finished ground surface.
- Pedestal signage has a height of 1220 m
- The emergency exits are clearly marked.
- Guest information in the rooms are presented in standard written format.





Getting Around



What to expect



- There is lift access to all levels.
- On the ground floor there are public male and female toilets and a Unisex accessible toilet.
- A change table is located in the Accessible toilets on the Ground floor.
- All rooms have independent temperature control.
- There is a shared laundry on the Ground floor
- The Pool is located on the ground floor between the Foyer and entry to Curve Restaurant.
- The gym is located on the Ground floor near the pool.
- There is internal, level access to Curve Restaurant from the Foyer.
- Flooring: Ranges from tiles and low pile carpet



Foyer



What to Expect

- There is a shared Foyer for both Adina and Vibe Hotels.
- The approach to the foyer is level with tiles.
- Front and rear approach to the foyer is possible.



- There is background music playing in the foyer.



- A fragrance is used in the foyer, with a strong scent.



- Lighting is lux at reception, more than 200





The Lift



- The lift is located to the left of the reception area
- Buttons are positioned at a height of 1110 mm with raised elevator buttons.
- Key reader is at a height of 1300 mm.
- Floors are indicated with high-contrast signage and Braille.
- The external lift button height 1100 mm.





Toilets



- There are accessible toilets as well as standard male/female toilets available for the guests of the Hotels.
- The accessible toilet is located on the ground floor near the Foyer of Vibe and Adina Hotels.
- Wayfinding is limited and you may ask staff for directions as needed.



- There is a baby change table in the Accessible Toilet.





Accessible Toilets



- The corridor leading to the toilets area approximately 1540 mm wide.
- The door width is greater than 850 mm
- There is a lever handle to enter and exit the toilet with a height of 1000 mm.





Accessible Toilets



- The toilet height is 460 mm
- Clear floor space to the right of the toilet is 2215 mm and to the left is 275 mm.
- Rails are on the left-hand side and to the rear of the toilet with a height of 800 mm.
- A duress alarm is situated to the left of the toilet at a height of 900 mm.



- The basin is located in the cubicle with a lever action tap at a height of 780 mm.
- The soap dispenser is at 1150 mm.
- There is unrestricted knee and foot clearance under the basin.
- There is a paper towel dispenser at 1000 mm.



The Pool

What to expect



- The pool is surrounded by a range of furniture.
- There are standard male and female toilets with a shower cubicle in each and there is a small external shower.



- Access to the pool area can be gained with a swipe key. The swipe pad is at a height of 1100 mm and has a textured indicator.
- There is an outswing door to the pool gate with at a height of 945 mm.
- The Child Safety gate has a height of 1500 mm.





The Pool



- Entrance into the pool is via 5 steps to a depth of 1.2 m.
- There is a handrail installed to the left of the stairs descending into the water at a height of 920 mm.
- Entrance into the spa area is via 4 steps with a handrail to the left, descending to an unspecified depth.
- There is no hoist or adaptive equipment to access the pool or spa.





The Pool



Furniture

- **Sun loungers:** are low with a height of 370 mm.
- **Standard Height Tables:** The pedestal table height is 740mm and the height of the clearance underneath is 725 mm.
- **Seating:** Firm chairs without armrests have a seat height of 460 mm.
- **Tall table:** Has a height of 1050 mm and the clearance underneath is 1020 mm
- **Seating:** High stools with backrests have a height of 750 mm.





The Gymnasium



What to expect

- Access to the gym is through an in-swinging door with swipe key access.
- The door has a width of 870 mm and the handle is situated at a height of 990 mm.
- The light switch has a height of 930 mm.
- Flooring: Low pile carpet
- A water fountain and sanitiser is available.
- There is restricted clear floor space between equipment.



- Background music is adjustable.



- The lighting is approx 300 Lux



- There is a mild fragrance present





Laundry



What to Expect

- There is level access with a concrete surface.
- The door has a width of 865 mm.
- The narrowest point throughout the space is 1000 mm.



Washer and Dryer

- The top loader washing machine has a height of 915 mm.
- The dryer is a front loader, with a handle height of 1000 mm.

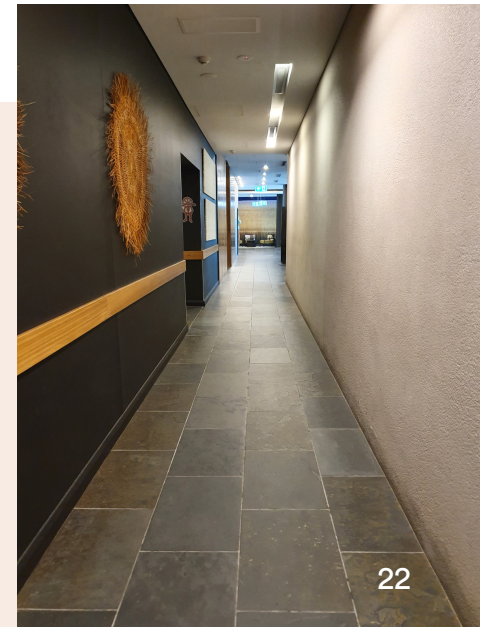




Getting to the rooms

What to expect

- There is lift access to all levels.
- Lighting varies throughout the corridors and can be adjusted.
- There is low pile carpet or tiles throughout.
- Staff can accompany you to your room as required.





Standard Studio



- The room used in this example is Room 329.

Entrance



- The lighting in the corridor approaching the room is between 30 and 130 Lux depending on the position under lighting.



- The inswing manual door has a width of 850 mm.
- The door handle is 1000 mm from the finished floor and the key swipe has a height of 1020 mm.
- Clearance at the entry is greater than 800 mm.
- There is level access throughout
- Flooring: Low pile carpet.



Sounds

This room may be impacted by the sounds of movement of other guests nearby.





Bedroom



Bedroom

- The bed has a compressed height of 560 mm and has an under-bed clearance of 85 mm.
- The clear floor space to the left of the bed is 730 mm and to the right of the bed is 2680 mm. There is a clearance of 1400 mm at the foot of the bed.



Furniture

- The table has a height of 730 mm and a clearance underneath of 670 mm.
- The chair without armrests has a height of 460 mm.
- The chair with armrests has a height of 400 mm.
- There is a wardrobe with a full-length mirror.



Emergency alarm

This room is fitted with a standard audio emergency alarm.



Bedroom



Lighting

- Lighting switches are installed at a height of 1000 mm.
- There are bedside lamps and an overhead light switch at the bedside.



Cooling/ Heating

- Air conditioning is available in this room. The air conditioner controller is positioned 1600 mm from the finished floor.



Power points

- Power points are installed at various heights and on the bedside tables



Kitchenette

- The bench height is 960 mm without knee or foot clearance.
- There is a fridge, kettle, and cups.

Other

- There is a phone on the bedside table.
- There is a safe in the room situated at a height of 550 mm.



The Ensuite



Entrance

- An inswinging door with a width of 770 mm.
- The height to the top of the handle is 1000 mm
- There is a small threshold ramp.



Lighting

- The light switch is positioned at a height of 1000 mm.



Toilet

- The toilet is located in the bathroom and has a height of 400mm
- The space between the toilet and the wall to the left is approx. 300 mm and the space between the toilet and the wall to the right is approx. 250 mm.
- There is adequate space for equipment such as a raised toilet seat or over-the-toilet aid.





The Shower



Shower

- The shower over the bath has a height of 500 mm with a fixed shower head.
- There is a fixed glass screen with an entry width of 740 mm.
- The vertical rail on the left has a height of 1150 mm from the top of the rail.
- The soap is installed at a height of 1170 mm from the surface of the bath.
- The tap handle is at 800 mm.
- There is a fixed showerhead.



Scents

There are fragranced products including hand soap, body wash, and shampoo/conditioner.





The Basin



Basin

- The basin with a mixer tap with a lever is located in the bathroom with a height of 900 mm.
- There is restricted knee and foot clearance under the basin.
- The soap is installed at a height of 1200 mm on the right of the basin.
- Hand towel is at a height of 1250 mm.
- Mirror is installed at a height of 1100 mm.
- Hooks are at a height of 1620 mm.



Power point

- The power point is installed at a height of 1000 mm.





One Bedroom



- The room used in this example is Room 401.

Entrance



- The lighting in the corridor approaching the room is between 30 and 130 Lux depending on the position under lighting.

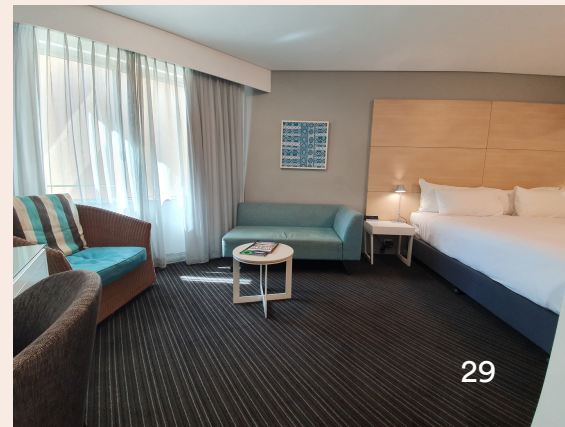


- The inswing manual door has a width of 850 mm.
- The door handle is 1000 mm from the finished floor and the key swipe has a height of 1020 mm.
- Clearance at the entry is greater than 800 mm.
- There is level access throughout
- Flooring: Low pile carpet.



Sounds

This room may be impacted by the sounds of movement of other guests nearby.





Bedroom



Bedroom

- The bed has a compressed height of 560 mm and has an under-bed clearance of 85 mm.
- The clear floor space to the left of the bed is 900 mm and to the right of the bed is greater than 1000 mm. There is clear floor space of 970 mm at the foot of the bed.



Furniture

- The table has a height of 730 mm and a clearance underneath of 670 mm.
- The chair without armrests has a height of 460 mm. Chair with armrests has a height of 460 mm.
- The couch has a height of 360 mm.
- There is a wardrobe with a full-length mirror.



Emergency alarm

This room is fitted with a standard audio emergency alarm.



Bedroom



Lighting

- Lighting switches are installed at a height of 1000 mm and lighting in the room is adjustable.
- There are bedside lamps and an overhead light switch at the bedside.



Cooling/ Heating

- Air conditioning is available in this room. The air conditioner controller is positioned 1600 mm from the finished floor.



Power points

- Power points are installed at various heights and on the bedside tables



Kitchenette

- The bench height is 960 mm without knee or foot clearance.

Other

- There is a phone on the bedside table.





The Ensuite



Entrance

- An inswinging door with a width of 770 mm.
- The height to the top of the handle is 1000 mm
- There is a small threshold ramp.



Lighting

- The light switch is positioned at a height of 1000 mm.



Toilet

- The toilet is located in the bathroom and has a height of 420 mm
- The space between the toilet and the wall to the left is 470 mm and the space between the toilet and the wall to the right is 650 mm.
- There is adequate space for equipment such as a raised toilet seat or over-the-toilet aid.





The Shower



Shower

- The shower over the bath has a height of 500 mm with a fixed shower head.
- There is a fixed glass screen with an entry width of 740 mm.
- The verticle rail on the left has a height of 1150 mm from the top of the rail.
- The soap is installed at a height of 1170 mm from the surface of the bath.
- The tap handle is at 800 mm.
- There is a fixed showerhead.



Scents

There are fragranced products including hand soap, body wash, and shampoo/conditioner.





The Basin



Basin

- The basin with a mixer tap with a lever is located in the bathroom with a height of 900 mm.
- There is restricted knee and foot clearance under the basin.
- Mirror is installed at a height of 1100 mm.



Power point

- The power point is installed at a height of 1000 mm.





This Accessibility Guide was designed and developed in collaboration with Flare Access Pty Ltd. For feedback on the guide please contact Vibe Hotels.

© Flare Access, All Rights Reserved. 2024 DISCLAIMER: Accessibility Guide developed by Flare Access. Observations made by Flare Access and additional information provided by Vibe Hotels. All materials have been compiled from information available at the time of production. They are not intended to replace professional advice including; but not limited to, access audits. All necessary care has been taken to design and produce Work(s). All measurements provided are within an approximate range. Full implementation guidelines are supplied in accordance with Work(s) in its entirety. You acknowledge and agree that you are using all services and facilities provided by Vibe Hotels at your own risk and you agree to defend, indemnify, save and hold Vibe Hotels and Flare Access Pty Ltd harmless from any and all demands, liabilities, costs, losses and claims, howsoever suffered, including but not limited to legal fees that may arise directly or indirectly from any service provided or agreed to be provided by Vibe Hotels and Flare Access Pty Ltd. You agree that this indemnification extends to all aspects of the Work(s), including but not limited to implementation and usage. Vibe Hotels and Flare Access Pty Ltd are indemnified of all claims, liability, and expenses that may arise from use of Work(s) as per usage and acceptance of these terms and conditions.